



Cable ID: LINHA LANDUTTI CATEGORIA 6 06

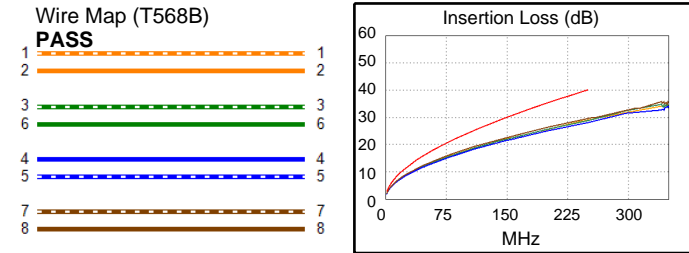
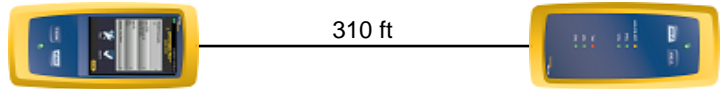
Test Summary: PASS

Test Limit: 5GBASE-T
Limits Version: V7.9
Date / Time: 10/22/2024 01:26:03 PM
Headroom 13.4 dB (NEXT 3,6-4,5)
Cable Type: Cat 6 U/UTP
NVP: 68.0%

Main: Versiv
S/N: 23380039
Software Version: V6.11 Build 2
Calibration Date: 05/16/2024
Adapter: DSX-602 (DSX-CHA004)
S/N: 23350225

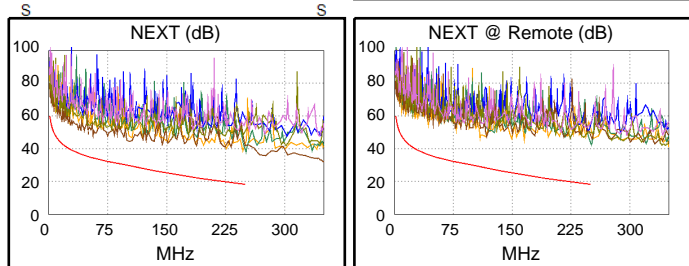
Remote: Versiv
S/N: 23380044
Software Version: V6.11 Build 2
Calibration Date: 05/16/2024
Adapter: DSX-602R (DSX-CHA004)
S/N: 23350224

| | | |
|-----------------------------|------------|-------|
| Length (ft), Limit 328 | [Pair 4,5] | 310 |
| Prop. Delay (ns), Limit 570 | [Pair 7,8] | 479 |
| Delay Skew (ns), Limit 50 | [Pair 7,8] | 16 |
| Resistance (ohms) | [Pair 7,8] | 17.74 |
| Impedance (ohms) | [Pair 4,5] | 110 |
| | | |
| Insertion Loss Margin (dB) | [Pair 7,8] | 10.4 |
| Frequency (MHz) | [Pair 7,8] | 250.0 |
| Limit (dB) | [Pair 7,8] | 40.1 |

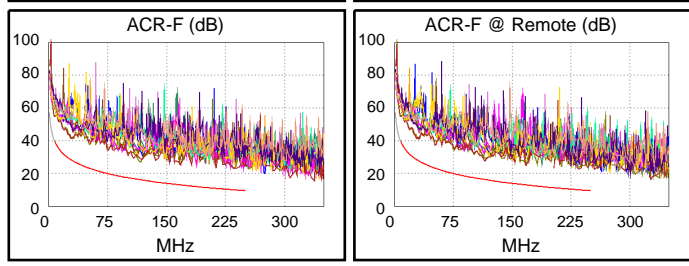


Worst Case Margin Worst Case Value

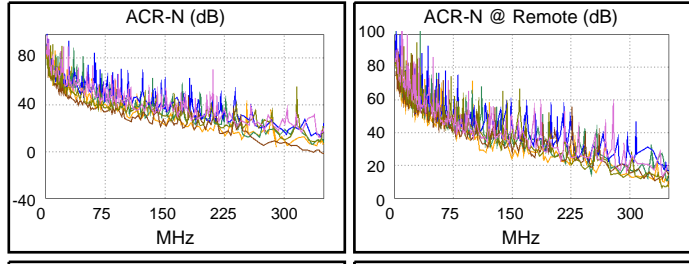
| PASS | MAIN | SR | MAIN | SR |
|---------------------|---------|---------|---------|---------|
| Worst Pair | 3,6-4,5 | 1,2-3,6 | 1,2-3,6 | 1,2-3,6 |
| NEXT (dB) | 13.4 | 15.6 | 20.3 | 21.6 |
| Freq. (MHz) | 17.0 | 14.1 | 247.0 | 165.5 |
| Limit (dB) | 43.2 | 44.5 | 18.4 | 23.9 |
| Worst Pair | 3,6 | 3,6 | 4,5 | 4,5 |
| PS NEXT (dB) | 15.4 | 17.3 | 21.8 | 28.1 |
| Freq. (MHz) | 3.1 | 3.1 | 250.0 | 250.0 |
| Limit (dB) | 52.3 | 52.3 | 15.2 | 15.2 |



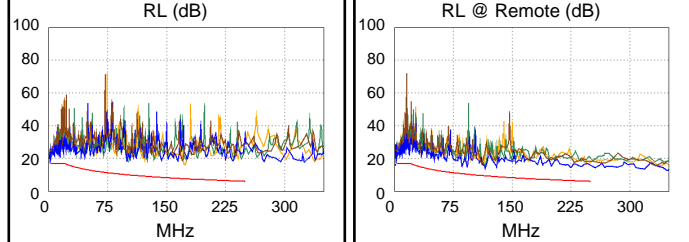
| PASS | MAIN | SR | MAIN | SR |
|----------------------|---------|---------|---------|---------|
| Worst Pair | 4,5-3,6 | 4,5-3,6 | 4,5-3,6 | 3,6-4,5 |
| ACR-F (dB) | 10.6 | 10.6 | 10.6 | 10.9 |
| Freq. (MHz) | 234.5 | 117.5 | 234.5 | 234.5 |
| Limit (dB) | 10.0 | 16.0 | 10.0 | 10.0 |
| Worst Pair | 3,6 | 4,5 | 3,6 | 4,5 |
| PS ACR-F (dB) | 13.3 | 12.8 | 13.6 | 12.8 |
| Freq. (MHz) | 234.5 | 248.0 | 248.0 | 248.0 |
| Limit (dB) | 7.0 | 6.5 | 6.5 | 6.5 |



| N/A | MAIN | SR | MAIN | SR |
|----------------------|------|----|---------|---------|
| Worst Pair | | | 3,6-4,5 | 3,6-7,8 |
| ACR-N (dB) | | | -1.9 | 6.4 |
| Freq. (MHz) | | | 350.0 | 341.0 |
| Limit (dB) | | | | |
| Worst Pair | | | 3,6 | 3,6 |
| PS ACR-N (dB) | | | -2.8 | 4.0 |
| Freq. (MHz) | | | 338.0 | 350.0 |
| Limit (dB) | | | | |



| PASS | MAIN | SR | MAIN | SR |
|----------------|------|-------|-------|-------|
| Worst Pair | 4,5 | 4,5 | 1,2 | 4,5 |
| RL (dB) | 4.8 | 4.2 | 8.1 | 4.2 |
| Freq. (MHz) | 5.1 | 116.0 | 173.0 | 116.0 |
| Limit (dB) | 17.0 | 9.4 | 7.6 | 9.4 |



Compliant Network Standards:
 10BASE-T 100BASE-TX 100BASE-T4
 1000BASE-T 2.5GBASE-T 5GBASE-T
 ATM-25 ATM-51 ATM-155
 100VG-AnyLan TR-4 TR-16 Active
 TR-16 Passive